

BUILDING INFORMATION

Metric to Imperial Steel Beam Converting

Metric	Imperial	Metric	Imperial	Metric	Imperial	Metric	Imperial	Metric	Imperial
W150x22	W6x15	W200x27	W8x18	W250x22	W10x15	W310x39	W12x26	W360x57	W14x38
W150x30	W6x20	W200x31	W8x21	W250x33	W10x22	W310x60	W12x40		
W150x37	W6x25	W200x36	W8x24	W250x38	W10x29	W310x67	W12x45		
		W200x42	W8x28						
		W200x46	W8x31						
		W200x59	W8x40						

Beam Schedule

Beam Schedule

Floor	No	Size	Condition	Support	Length
B	100	W200x27	Dropped	3'-3"	15'-5"
F	100	W200x27	Dropped	3'-3"	15'-4"
F	101	W200x42	Dropped	3'-3"	18'-5"
F	102	3/2"x8"	Dropped	3'-3"	4'-4"
F	103	3/2"x8"	Dropped	3'-3"	14'-3"
F	104	3/2"x8"	Dropped	3'-3"	4'-4"
F	105	LVL by Other	Dropped	3'-3"	8'-0"
F	106	LVL by Other	Dropped	3'-3"	4'-0"
F	107	LVL by Other	Dropped	3'-3"	16'-0"
R	100	Girder truss	Flush	3'-3"	36'-2"
R	102	Girder truss	Flush	3'-3"	35'-11"
R	104	LVL by Other	Dropped	3'-3"	7'-0"
R	104	Girder truss	Flush	3'-3"	14'-7"
S	100	LVL by Other	Dropped	3'-3"	4'-0"

NOTE TO TRUSS MANUFACTURE:

2019.11.27 - Manufactured Items and Materials

All materials like a truss, floor joist, beams, etc. **CAN NOT** be designed, put into production or purchased for installation based upon these drawings alone.

ALL dimensions need to be verified during construction and before the material is purchased, ordered or put into production. The manufacture, like the truss manufacturer, builder, contract or framer **MUST**

review all relevant dimensions and inform Virtual Creations and the manufacture of any discrepancies. At the minimum the client must at least contact Virtual Creation to review the as build condition before purchasing, ordering or putting into production any and all materials.

FAILURE to verify these dimensions will absolve Virtual Creations of any responsibility of errors or discrepancies in our plans. By paying this invoice you agree to this requirement and condition.

DIMENSION NOTE:

2019.12.05 - There are different ways of dimension architectural floors, what follows is an explanation of the why interior walls are dimensioned as 4" or 6" vs other methods.

Some Architectural drawings chose to dimension the rough wood stud framing. However this would create a lot fractioned dimensions on the plans and would require the framer to account for the 1/2" drywall material in some conditions like bathroom tubs and stair wells.

Some Architectural drawings chose to dimension the finished wall thickness. However this would create a lot fractioned dimensions as well.

These Architectural set of drawings chose to dimension interior walls to a round 4" or 6" dimension. We feel this is the cleanest dimension as they do not have fractions, and at most produce a 1/8" error which isn't typically an issue. Further we full appreciate that we can not ask trades in the field to measure to 1/8" accuracies nor to we assume that as built construction could hold these tolerances.

Part 4 Loads used

- 20lb Dead Load
- 40lb Live Load (interior)
- 50lb Live Load (exterior)
- 32lb Snow Load
- 10lb Wind Load

Deflection limits

- L/425 Floors (interior)
- L/360 Floors (exterior)

Electrical Safety Authority

Doing electrical work? A notification must be filed with the Electrical Safety Authority. Hiring someone to do electrical contractor.

It's the law.

For more information go to www.esosafe.com or call 1-877-372-7233

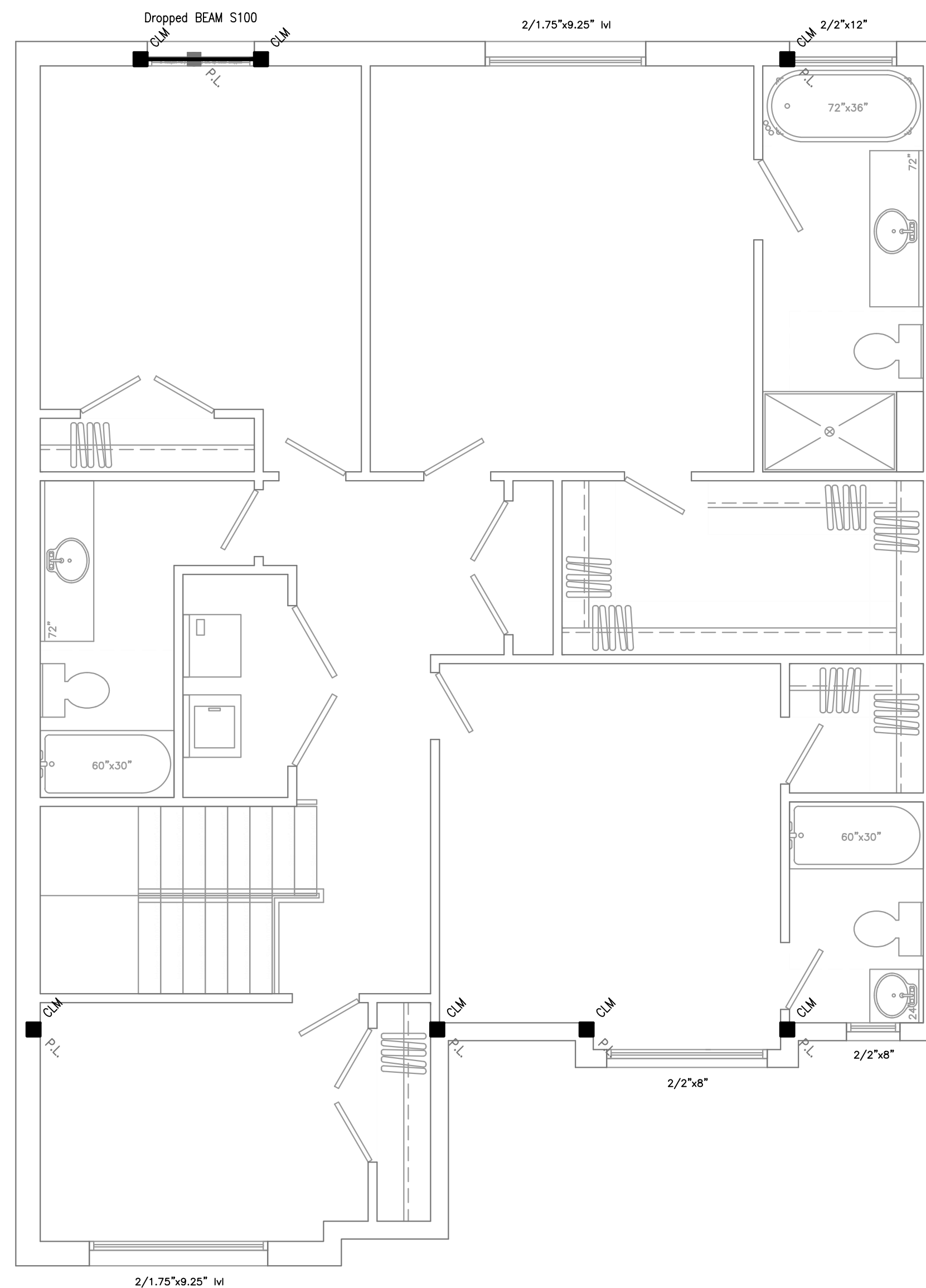


Notes: Engineering Drawings

These drawings shall be read in association with the engineering floor joist and specifications as well as the engineering truss layout and specification.

OBC 9.10.19.3 - Smoke Alarms (Renovations Only)

Existing smoke alarms are acceptable, however, if the scope of work involves renovating existing bedrooms, changing room uses from a non bedroom use to proposed bedroom use or an addition which includes a bedroom many requirements of 9.10.19.3 would apply including being interconnected, hardwired and with visual notification. If a smoke alarm is required it will be noted on drawings



PROJECT: Stonehaven Plan 1b, Burlington Ontario

PROJECT No: 2020-068

BCIN No. 28844

(905) 481 1153

ISSUED: 04.29.2021

Architectural Consulting Services

Virtual Creations Inc.

Small Buildings

Classification : _____

Client : Dawn Victoria Homes

Original Signature: _____

www.vcinc.ca

Eric Canton BCIN#251515

AT VIRTUAL CREATIONS INC. THE BEST EFFORT HAS BEEN MADE TO RECORD EXISTING BUILDING STRUCTURES AND PROPOSED A COMPREHENSIVE SET OF CONSTRUCTION DRAWINGS. HOWEVER, THERE ARE AREAS AT THE TIME OF DESIGNING THAT ARE UNAVAILABLE OR INACCESSIBLE. WITH PROPER CO-ORDINATION WITH THE MANUFACTURER OF THE MATERIALS, THE DESIGNER WILL BE RESPONSIBLE FOR THE ACCURACY OF THE DRAWINGS. THE CLIENT IS ADVISED THAT THE DRAWINGS ARE FOR INFORMATION ONLY AND ARE NOT TO BE USED FOR CONSTRUCTION. ALL DESIGNS AND DRAWINGS ARE THE SOLE PROPERTY AND COPYRIGHT OF VIRTUAL CREATIONS INC. ANY REPRODUCTIONS MUST BE AUTHORIZED BY VIRTUAL CREATIONS INC OR PURCHASED THROUGH VIRTUAL CREATIONS INC DIRECTLY.

Second Floor Plan

SCALE 1/4" = 1'-0"

S1-03